

Owen Sound Stamp Club

Chapter 191

Royal Philatelic Society of Canada

Next meeting: Wed. August 17th 2011 @ 7:00

From the President...



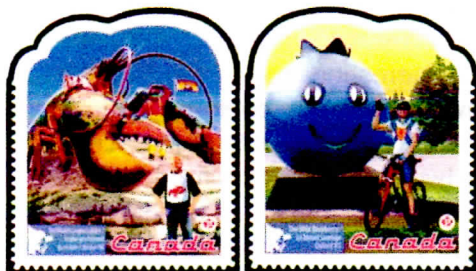
Well, it is time to welcome you to the next meeting of the Owen Sound Stamp Club. The meeting will be on Wednesday, August 17th at 7 PM at the usual meeting place, the basement of the St. George's Anglican Church in Owen Sound. At the time of writing, the heat has gone, so let's hope it doesn't prove to be too much of a temptation to stay away for August's meeting. The Saugeen Circuit books will be present for this month's meeting and I know there have been many additions over the last couple of months, I think there were a lot of pages added in the UK section.

It was the Kincardine show a few days ago but I can't comment on it since it hasn't happened when this welcome was written. I hope you had the opportunity to go and found something of interest. As always, please invite someone to come along to the meeting and hopefully there will be an interest in joining the club. I spoke with a cousin who has an interest in stamps and will try to encourage him to come and see if he is interested. Please bring something along for show and tell and don't forget the one page challenge.

At the last meeting we had a lively, but small club auction. It was nice to see a few guests, **Marion Ace** brought her granddaughter **Chelsea** and **John Cortan** also brought along a semi regular visitor, **Ron MacDonald**. We had a lively discussion about *Machins*, which I believe Marion will expand on in the rest of the newsletter. See you all at the meeting.

Phil Visser
President OSSC

On the Cover...Roadside Attractions



It's summertime and here we are on the road again. This leg of our three year virtual road trip across Canada brings us to four roadside attractions across the Maritimes.

Our first stop is to see the world's largest lobster located in Shediac New Brunswick. This giant sculpture is made of reinforced concrete and steel. It was created by the well known animal sculptor Winston Bronnum. The sculpture really is quite wonderful and large! The 50 ton sculpture is more than 10 meters long and 5 meters high.



Each of these stamps has a tourist shown in the foreground to give you an idea of the actual size of the sculpture. If you look closely at the lobster stamp you will see a full-sized lobster fisherman standing on the stairs by the lobster as part of the sculpture. Many of the half a million visitors to Shediac have their picture taken with the lobster fisherman. The town has held a lobster festival in July for the last 61 years and the Shediac Motorcycle Lobster Rally will be held on August 26th this year.

The smallest and perhaps cutest attraction on our route is Oxley, the wild blueberry. This reinforced concrete sculpture is 2.4m high and 3.3m wide. It was brought to Oxford Nova Scotia by Irving Oil to stand
(On the Cover is continued on the next page)

(On the Cover is continued from the last page)

at a gas station at the entrance to the town. The official nickname of Oxford is The Wild Blueberry Capital of Canada. The town also has the Wild Blueberry and Maple Center and a Blueberry museum.

Food seems to be a running theme here in the Maritimes. Our next stop is to see the Big Potato in O'Leary Prince Edward Island. Of course the whole island is famous for potatoes but this giant spud guards the entrance of the Prince Edward Island Potato Museum. Dr. L. G. Dewar, founder of the museum and stamp collector would have been very proud of the new stamp. This is certainly the plainest of the objects on our tour but very important as a major food staple.

Our last stop is a visit to Glover's Harbour Newfoundland to see a giant squid. While squids are definitely food I don't think anyone wanted to eat the original model for this sculpture. The life size giant squid sculpture was completed in 2001 but it represents an enormous 16.7 meter (55ft.) long squid caught there in 1878. It is recognized by Guinness Book of World Records as the largest creature of its kind. Guinness has the original beast which weighed 2.2 tons. The new sculpture weighs in at 4 tons. The giant squid is located near the shore where it was hauled in so long ago.

The official release site for the latest *Roadside Attractions* stamps was at Shediac, New Brunswick for the lobster festival there on July 7th 2011 and the OFDCs are cancelled there. Each of the other three towns also had an unveiling of their stamp on the same day.

Like the previous *Roadside Attraction* stamps the new stamps are available in a booklet of eight die cut stamps with rounded tops as shown here or as a souvenir sheet of four perforated rectangular stamps.

I hope that you enjoyed the trip!

On your cover this month is one of the four stamps from the souvenir sheet since it is more likely that you will receive some of the booklet stamps in your mail. The Ed.

The Travels of a Volunteer; Part 2.

By Dave Pugh

In March we had Part 1 of Dave's travels in Peru where he and some buddies helped to build an orphanage and visited some Andean sites. Afterwards Dave and his friend also called Dave continued the voyage with a trip to the Amazon. Most of us think of the Amazon as the huge river system that stretches right across Brazil, which is true but its beginnings are in the mountains in Peru where the two Daves began part 2 of their adventures at Iquitos.

On arrival in Iquitos, we were met by our tour company and taken to our hotel for the evening, La Casa Fitzcarraldo. Next morning we were picked up and taken to the Lodge Office to acquire our rubber boots, which we will wear every where when away from the Lodge. We headed to the dock for the for a 3 hour boat ride to up river and up a side stream to the Muyuna Lodge. The trip was interesting, seeing the Amazon River for the first time. There was an incredible amount of river traffic with every vessel you could think of.



Boats of all shapes and sizes ply the waters of the Amazon

At the Lodge we joined five other guests: a young couple from Chile, a mature gentleman from Madrid Spain and two early 20's girls from Montreal backpacking their way around South America. The lodge has the capacity for 48 guests. Everyone sits down for the meal in the great dining and activities room. The kitchen staff and guide accommodation are in the rear. Our food was a tremendous variety of fruits, juices, rice, potatoes, plantain, fish, chicken soups and some unidentifiable items, all of which was excellent.

The whole lodge is screened in including the ceiling, the roof is palm leaf thatched and the lighting is by kerosene lanterns or candles. Off the dining area and outside the screen are half a dozen hammocks, chairs, tables and other lodge furnishings. There was an array of both Spanish and English language reading materials, including flora and fauna identification books for the Amazon Basin. The rooms have two single beds, porch with hammocks, bathroom facilities and showers with static temp water.

Our guide "Usell" wasted no time in getting us acquainted with the area. Our expectations of the Usell our guide were met and exceeded on all fronts. The day we arrived Usell took us on a short 2 hour trek.

(The Travels of a Volunteer, Part 2 is continued on the next page)

(The Travels of a Volunteer, Part 2 is continued from the last page)

Next morning off we went in a boat for an inter lake trek and fishing. The boat met us at a predetermined pickup location with bait, fishing lines and poles - we are going after the Piranha. I managed more out of luck more than skill to catch the biggest one, which was grilled for us at our evening meal. That afternoon we did another boating adventure in another direction being dropped off and picked up later at another location. Birds, monkeys, bugs trees and so on continued to enter the picture.



You don't get a good idea of scale from the photo. These lily pads are 2 meters across.

The next day was our 6 hour trek into the forest, this included an additional staff member Walter; our porter with the noon lunch. I'm just not sure how far we walked but estimated about 5 or 6km's round trip. We had lunch with the mosquitoes of lettuce, hard boiled eggs, tuna (can each), dressings, buns with spread and fruit and were back to lodge by mid-afternoon.

Later that afternoon, the guide and I were taken downstream for a few miles with canoe in tow, dropped off and canoed back to the lodge. With the canoe, one is able to get a lot closer to the birds and shoreline, as the guide was able to pick out sloths, monkeys and bats that the untrained eye would never see. Next morning, our last day, we all went downstream to the main Amazon River to view the grey and pink fresh water dolphins. On return to the Lodge we had lunch and said our goodbyes, and began the return boat trip to Iquitos. As we were now traveling downstream the trip was $\frac{1}{2}$ to $\frac{3}{4}$ hour shorter as the Amazon River flows at about 3.5 to 4 mph.

We saw a wide variety of watercraft on the river including dugout canoes, canoes, flat bottom keeled board boats, aluminum keeled flat bottom, high speed outboards, river busses, barges, oil barges, tugs, cruise boats, ocean going tankers, lumber rafts, lumber barges, river taxis and personal boats.

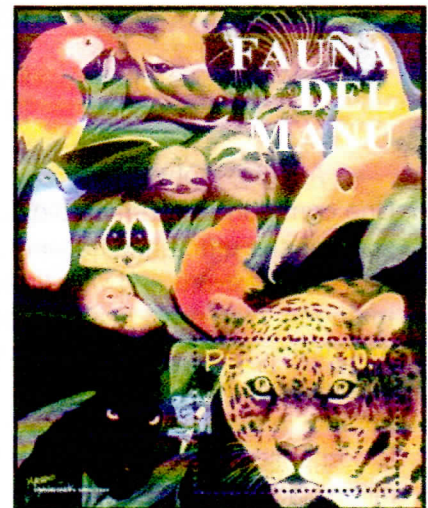
The birds seen both on the water and in the forest included geese, kingfisher, herons, egrets, hawks, owl, vultures, toucans, parrots, orioles, flycatchers, terns and many more. The animals included grey and pink fresh water dolphins, sloth, a marten and monkeys such as: pigmy, saddle back, holler and night. Amphibians included skinks and frogs. Fish included tiger catfish, armored catfish, piranha, some type of bass, and many other river fish as seen in the markets. Insects included cicada, beetles, millipedes, many butterflies, moths, leafcutter ants, army ants, fire ants, spiders and others, and oh, I forgot mosquitoes.

Back in Iquitos we were driven to the La Casa Fitzcarraldo to stay for two more nights. This is an amazing Hotel or B&B. It has room for maybe 12 including several secluded guest cabins, a five story tree house, swimming pool, restaurant and bar. It was also the base for the making of the movie La Casa Fitzcarraldo.

Usell; our guide from the lodge, joined us for the next two days giving us his view on the native slant on things. We took a taxi to Nauta, some 90kms south by road to visit the market and tour town on foot. The walks through the markets with Usell were an adventure; he explained what we were looking at in detail including native medicines. He travelled with us and we paid his way and a gratuity at the end of our stay in Iquitos. We found the people for the most part very friendly and accommodating despite our lack of Spanish.

The next day we toured the log raft village, stilt village and the market in Iquitos. Late afternoon we returned to Lima by Peruvian Airlines. Now, being Monday after touring historic Lima and the Inca Market, we collected our bags and returned to the Lima Airport for our overnight flight back to Canada.

Would I do it again? In the blink of an eye. David Pugh



Wildlife abounds in the jungle foliage along the shores of the Amazon R.

Dave is a new member of the OSSC. He'll be attending our show in September.

In the Spotlight...Can You tell the Difference?



A. lithography B. Photogravure

There are hundreds of varieties of the stamps known as Machins. They are named after Arnold Machin who sculpted the bas relief of the Queen's profile that is the focus of these simple elegant stamps.



A. lithography

One common problem cataloguing Machins is spotting the difference between Machins printed with photogravure and with lithographic printing methods. You must use a loupe or a strong magnifying glass. The easiest area to spot the difference is the denomination. Lithographic printing leaves very clean cut edges. Photogravure is comprised of dots which create rounded edges all around numbers, letters and the entire outside edge. Any fuzziness you see on stamp A. is due to the equipment used to reproduce this image.



B. Photogravure

I am a member of the Owen Sound Stamp Club and the Saugeen Stamp Club. There is always much hustle and bustle at the Saugeen meetings in Hanover. There can be anywhere from 20 to 40 people in attendance. The Owen Sound club is much smaller and consequently much more intimate. I find that when we have a guest speaker it is easier to pay attention and focus on the speaker and their topic. It is also true that we often have completely random philatelic discussions among the whole group. This is really great because we then get input from a number of people who know the subject and questions from a number of people who want to know more. At last month's meeting **John Cortan** brought in a box of Great Britain's Machin stamps. Most stamp collectors are aware of Machins and generally run across very many of them. A discussion popped up about the stamps. One of the questions raised was about telling the difference between 'litho and photo' Machins. I happened to have my handy dandy lighted loupe with

me so I dug around in the box of Machins and came up with an example of each type in bright blue 2nd class stamps. These were passed around along with the loupe so that everyone could see the difference first hand. **Judy Galbraith** had a lovely little magnifying glass that hangs on a chain around her neck that was also strong enough to spot the difference. Knowing how to spot the difference between lithographic stamps and stamps printed by other methods can be important with other definitive stamps too.

There are a number of other differences between these two stamps. While A. is produced in the era of elliptical side perforations, the image is still the original Queen type of 1970 and B. is the redrawn type that began use in 1997. This type is most easily spotted by the sharper lines in the Queen's hair. Another difference that you may spot here is that stamp B. has a die cut edge which tells us that it is a self adhesive stamp and it has much bolder colour.

Something that may be new to some readers is that stamp A. has a type B2 head. Notice that the shape of the bottom of the bust is different from stamp B. (stamp B is the norm) and stamp A's head is further from the edge. Both of these stamps have a phosphorous center band that can be seen with an ultra-violet light. Stamp A's band is yellow while stamp B's is blue. Scott's Catalogue lists nine varieties of bright blue 2nd class rate stamps. These do not include tagging, paper and gum varieties or the new slitted stamps. I have fun looking for the various perforations and fluorescent and phosphorescent tagging but paper and gum varieties are way beyond me.

Machin collections can be very simple or quite complex. It was mentioned at the meeting that Machins are now a subject on Wikipedia. This site gives some good information and history about Machins. There are a number informative websites and books focussed entirely on Machins. The "Great Britain Machins by The 'Machin Nut'" website run by Robin Harris and Adminware Corp. is a veritable font of information about determining different varieties. There is so much to learn! Every time I delve into that site I come out a little

(In the Spotlight is continued on the next page)

(In the Spotlight is continued from the last page)

more knowledgeable about Machins and perhaps even more baffled in some areas. The address is:

http://www.adminware.ca/machin/m_intro.htm



In the last few years Machins have changed substantially. Now 1st and 2nd class stamps and high value common denomination stamps (ie. £1.00, £2.00 etc.) are iridescent self adhesive die cut stamps with oval die cut slits. They are overprinted with the words 'Royal Mail' in wavy lines. The iridescence makes the lettering difficult to see on certain angles. These new attributes are security measures to prevent reuse and counterfeiting of the stamps. While the slits make it very difficult for people to illegally reuse these stamps, they also make it very hard for collectors to soak off stamps without tearing them.

From the Editor...



I hope that you are considering bringing an exhibit to the show in September. The Club would also appreciate donations for door prizes.

Please help support the stamp club. Don't forget to buy your tickets for our 2011 Stamp Show Raffle. They are 4 tickets for \$5.00 or 1 for \$2.00. If you can't make it to the meetings, send me five bucks and I'll include your tickets with your newsletter. Time is running out!

Hey, don't forget to visit our buddies in Kincardine! See you there and see you on Wednesday. *The Editor*

Coming Events...

- AUG. 13, Kincardine, ON
KINEX 2011, Davidson Centre, 601 Durham St. Seniors Room. Note this is a new location. The Davidson Centre is just off Hwy. 21 on Durham St. Hours are 10 a.m. to 4 p.m. Free admission and parking, eight to 10 dealers, youth table, door prizes, lunch booth. For more information contact John, telephone 519-395-5817, email jcortan@hurontel.on.ca.
- AUG. 20, Bracebridge, ON
MUSPEX 2011, Muskoka Riverside Inn, 300 Ecclestone Drive. Hours: 9:30 a.m. to 4 p.m. Free admission, free parking, exhibits, 10 dealers, door prizes, club sales table. Sponsor/Affiliate: Muskoka Stamp Club. For more information, contact Bruce Hughes telephone 705-385-2020
- SEPT. 2 - 4, North Bay, ON
BNAPEX 2011, Clarion Resort Pinewood Park Hotel, 201 Pinewood Park Dr. Exhibits, bourse, study group meetings, seminars, area tours, awards banquet. Sponsor/Affiliate: British North America Philatelic Society. For more information contact John Beddows, email: jlw@onlink.net, PO Box 21077, North Bay, ON P1B 9N8. Website: <http://www.bnaps.org/bnapex2011>.
- SEPT. 17, Toronto, ON
Fall Postage Stamp Bourse, Yorkminster Park Baptist Church, 1585 Yonge St. Free admission, club sale circuit, wheelchair access, refreshments available. Sponsor/Affiliate: North Toronto Stamp Club. Hours: 10 a.m. to 4 p.m. For more information, contact Herb, telephone 416-445-7720, email ntstampclub@yahoo.ca. Website: <http://www.NorthTorontoStampClub.tk>.
- SEPT. 17, Owen Sound, ON
Owen Sound 16th Annual Stamp Show and Sale, Royal Canadian Legion, 1450 2nd Ave. W. NOTE: New location. Hours: 10 a.m. to 4 p.m., eight dealers, door prizes, free parking and admission, exhibits and free stamps for kids. Sponsor/Affiliate: Owen Sound Stamp Club. For more information contact Marion Ace, telephone 519-934-1998, email marionace@bmts.com.

- **SEPT. 17, St. Catharines, ON**
Best Western Stamp Show, Niagara Room, Best Western Hotel, QEW at Lake St. Hours: 10 a.m. to 4 p.m. Free parking and admission. Specializing in stamps and covers of Canada and the British Commonwealth. Sponsor/Affiliate: Roy's Stamps. For more information contact Roy Houtby, telephone 905-934-8377
- **SEPT. 17, London, ON**
Midpex 2011, Argyle Mall, 1925 Dundas St. Hours: 10 a.m. to 4 p.m. Free admission and parking, wheelchair accessible, 100 frame judged exhibit open to all, 18 dealers, draws. Sponsor/Affiliate: London and Middlesex Stamp Club. For more information contact Patrick Delmore, telephone 519-471-, email patrickjdelmore@hotmail.com. Website: <http://www.middlesexstampclub.com>.
- **SEPT. 17, Burlington, ON**
Burloak Stamp Fair, Burlington Seniors Centre. Regular Monthly Stamp Show on the 3rd Saturday of every month; in our 17th year, six to nine dealers. Active buyers - always new material. Lots of free parking. For more information contact Michael Anderson, telephone 905-632-6057, email mpanderson@cogeco.ca.
- **SEPT. 24, Cobourg, ON**
COPEX 2011, Salvation Army Hall, 59 Ballantine St. Hours 9:30 a.m. to 3:30 p.m. Eight dealers, club consignment table, lunch counter, exhibits, free admission and parking, wheelchair accessible, draw prizes. Sponsor/Affiliate: Cobourg Stamp Club. For more information contact Harold Houston, email hhouston@cogeco.ca.
- **SEPT. 24, Milton, ON**
Milton Stamp Fair, Milton Sports Centre, Derry Road and Santa Maria Blvd. Hour: 10 a.m. to 4 p.m., free admission, plenty of parking, 17 dealers, club sales circuit, youth table, lunch counter, silent auction, enter through rear entrance and turn right to the Banquet Room. Sponsor/Affiliate: Milton Stamp Club. For more information, contact Diane Jarvis 905-864-6140 or miltonstampclub@gmail.com.
- **SEPT. 25, Dundas, ON**
26th Annual Golden Horseshoe Postcard Club Show and Sale, Dundas Lions Memorial Community Centre, 10 Market St. S. Hours: 10 a.m. to 4 p.m. A multi-dealer sale of postcards and related items. Displays by club members. Dealers will provide valuations on collections. Postcards may be bought, sold and traded. Free parking. Free admission. Food will be available for purchase. For more information contact Jon Soyka, telephone 905-388-5840, email jonsoyka@mountaincable.net.

Owen Sound Stamp Club

Chapter 191

Royal Philatelic Society of Canada

The Owen Sound Stamp Club meets at 7:00 pm on the third Wednesday of each month in the basement of St. George's Anglican Church (corner of 10th St. E. and 4th Ave. E.). The main business of the evening is typically to trade, buy and sell stamps and philatelic material. An Auction is often held at 8:00 pm. There are presently about 25 active members whose interests cover just about everything at all levels, from beginner to expert. Guests or new members are always most welcome. Annual membership fees: \$15; Junior- Free

Club Officers:

President: Phil Visser (519) 376-6760
RR #5., Owen Sound ON N4K 5N7
psvisser@hurontel.on.ca
Vice-Pres.: John Cortan (519) 395-5817
P.O. Box 295, Ripley, ON NOG 2R0
jcortan@hurontel.on.ca
Sec./Treas: Bob Ford (519)376-4788
721 8th Ave. E., Owen Sound, ON N4K 3A5
rob.darford@rogers.com
Editor: Marion Ace (519) 934-1998
P.O. Box 286, Tara ON NOH 2N0
marionace@bmts.com

